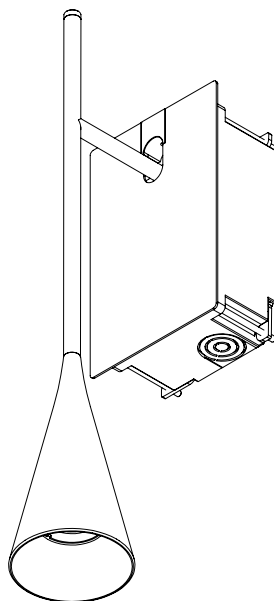
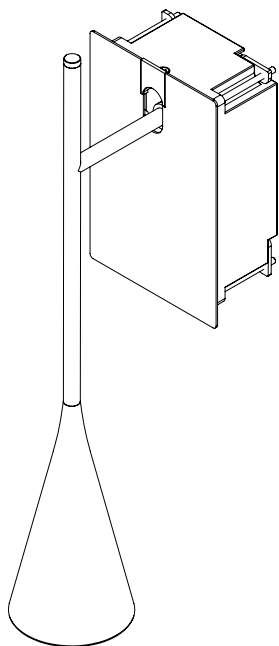


hoyer
barcelona lights

SKYBELL PLUS A/02



10/04/2025

Model: Skybell Plus A/02



Suitable for wet locations
Convient aux endroits humides
120V - 277ac ~ 50/60 Hz
MAX 5 W LED

LUMINAIRES - FIXED

CERTIFIED BY / CERTIFIÉ PAR

This product conforms to the standard UL 1598:2021 Ed.5+R:31Jan2024
and it is Certified to CAN/ CSA C22.2#250.0:2021 Ed.5+U1;U2

Ce produit est conforme à la norme UL 1598:2021 Ed.5+R:31Jan2024

et il est certifié conforme à la norme CAN/CSA C22.2#250.0:2021 Ed.5+U1;U2



DANGER—RISK OF SHOCK—DISCONNECT POWER BEFORE INSTALLATION / DANGER - RISQUE DE CHOC - COUPER LE COURANT AVANT L'INSTALLATION:



This product must be installed in accordance with the applicable installation code by a person familiar with the construction and operation of the product and the hazards involved.

Ce produit doit être installé conformément au code d'installation applicable par une personne familière avec la construction et le fonctionnement du produit et les risques encourus.

BRANCH CIRCUIT CONNECTION INSPECTION / INSPECTION DE LA CONNEXION DU CIRCUIT DE DÉRIVATION:

To inspect branch circuit connections the lamp is to be removed from the canopy. Don't forget to turn off the electricity as recommended in the instructions.

Pour inspecter les connexions du circuit de dérivation, la lampe doit être retirée de l'auvent. N'oubliez pas de couper l'électricité comme recommandé dans les instructions.

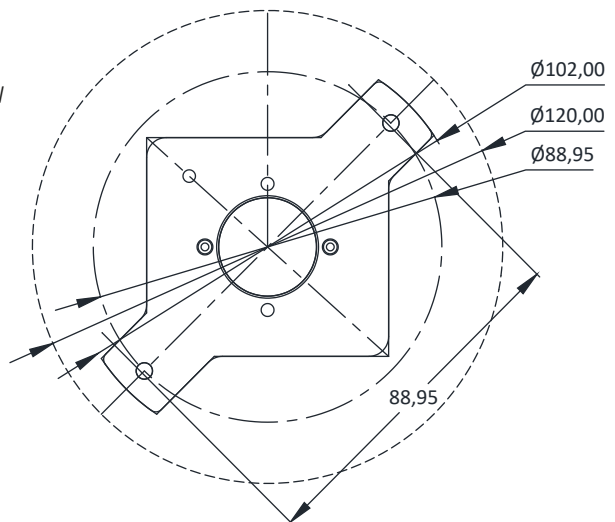
MAINTENANCE / MAINTENANCE:

Use a slightly-wet cotton cloth for cleaning.

In case of malfunction or damage, please contact the retailer who sold the lamp.

Utilisez un chiffon en coton légèrement humide pour le nettoyage. En cas de dysfonctionnement ou de dommage, veuillez contacter le détaillant qui a vendu la lampe.

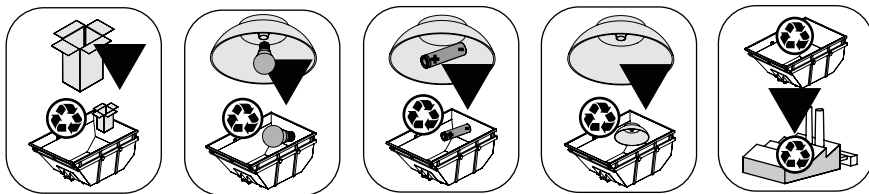
DIMENSIONS OF FIXING/ DIMENSIONS DE LA FIXATION



35759 Skybell Plus A/02 - Read all the instructions-Save all the instructions

Lisez toutes les instructions - Conservez toutes les instructions

RAEE
6616
WEEE
19406
DE 59577143



•Maintenance

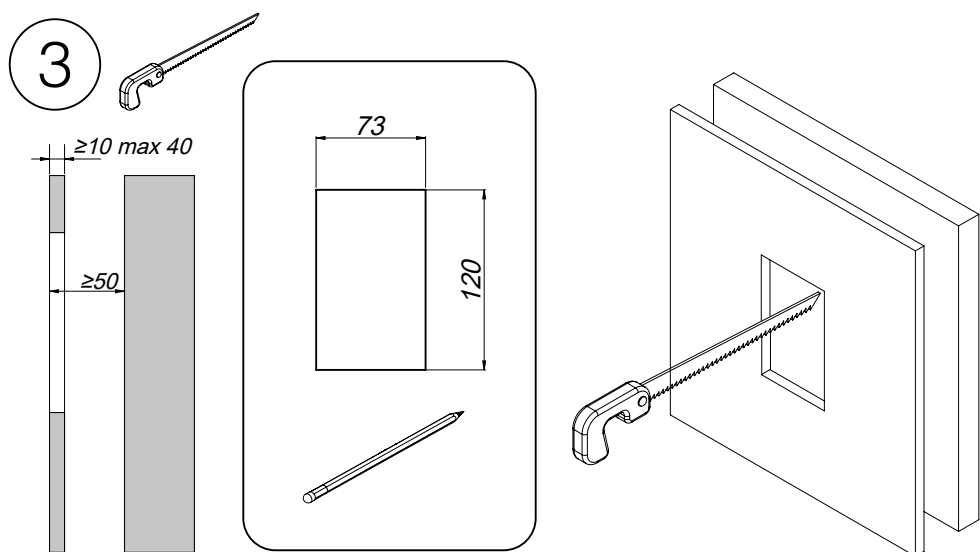
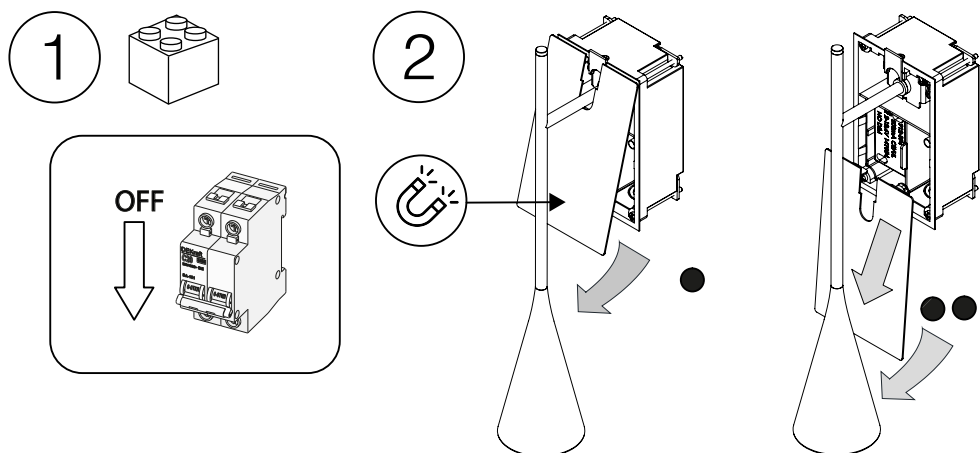
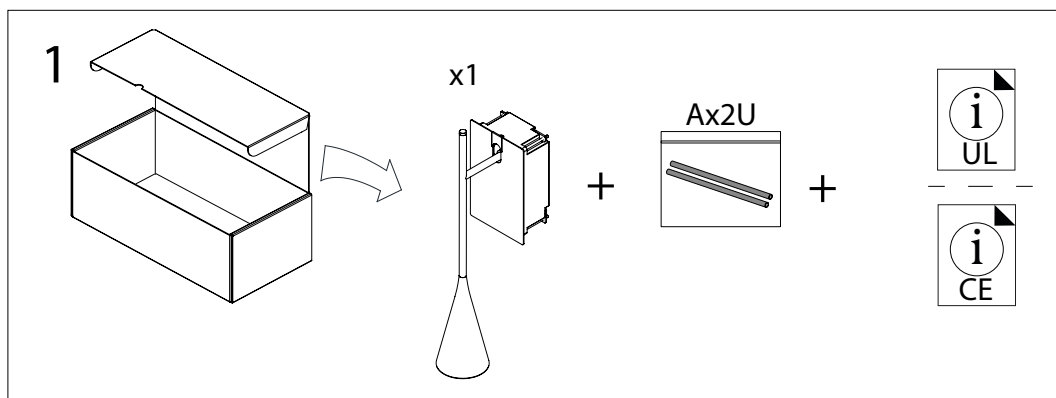
Use a slightly-wet cotton cloth for cleaning.

In case of malfunction or damage, please contact the retailer who sold the lamp.

•Entretien

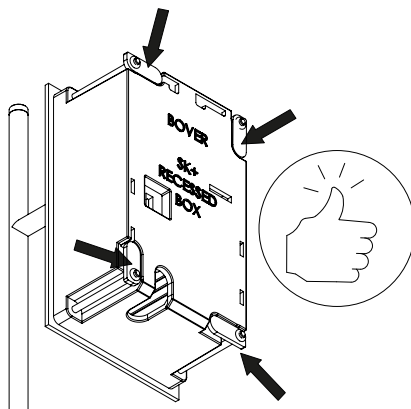
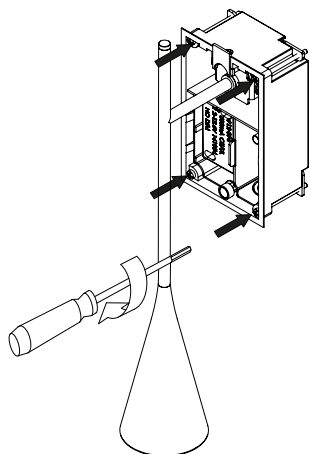
Pour nettoyer le luminaire, utilisez un chiffon en coton légèrement humidifié d'eau.

En cas d'incident ou de défaillance du luminaire, contactez directement l'établissement où vous l'avez acheté.

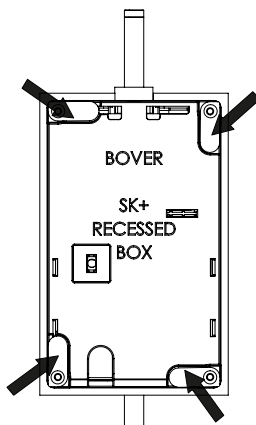


35759 Skybell Plus A/02 - Read all the instructions-Save all the instructions
 Lisez toutes les instructions - Conservez toutes les instructions

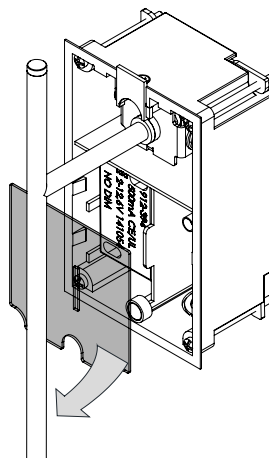
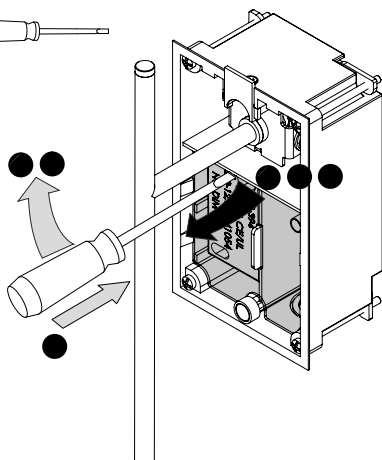
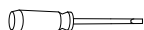
4



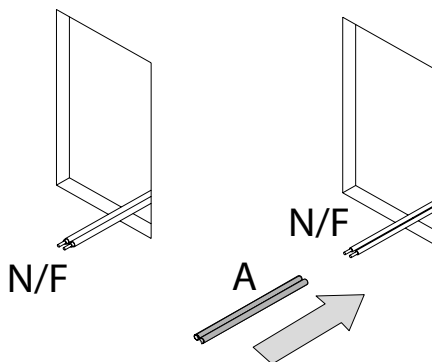
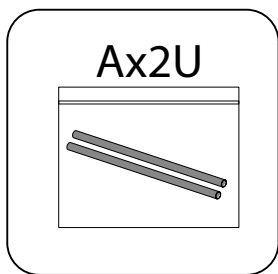
5



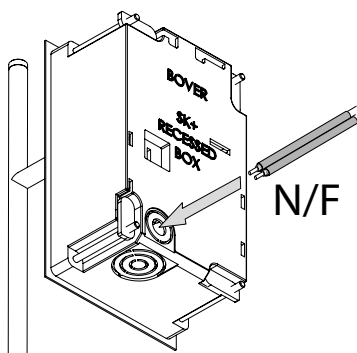
6



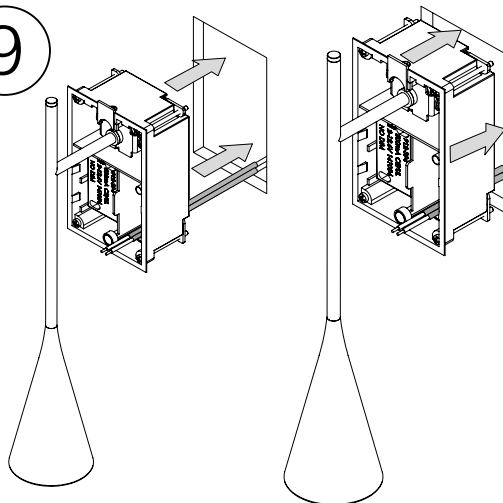
7



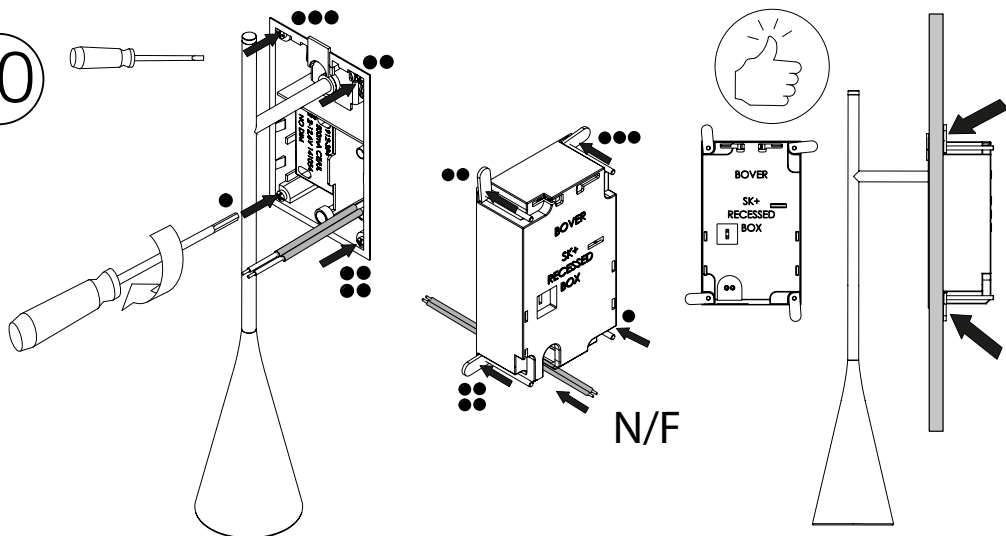
8

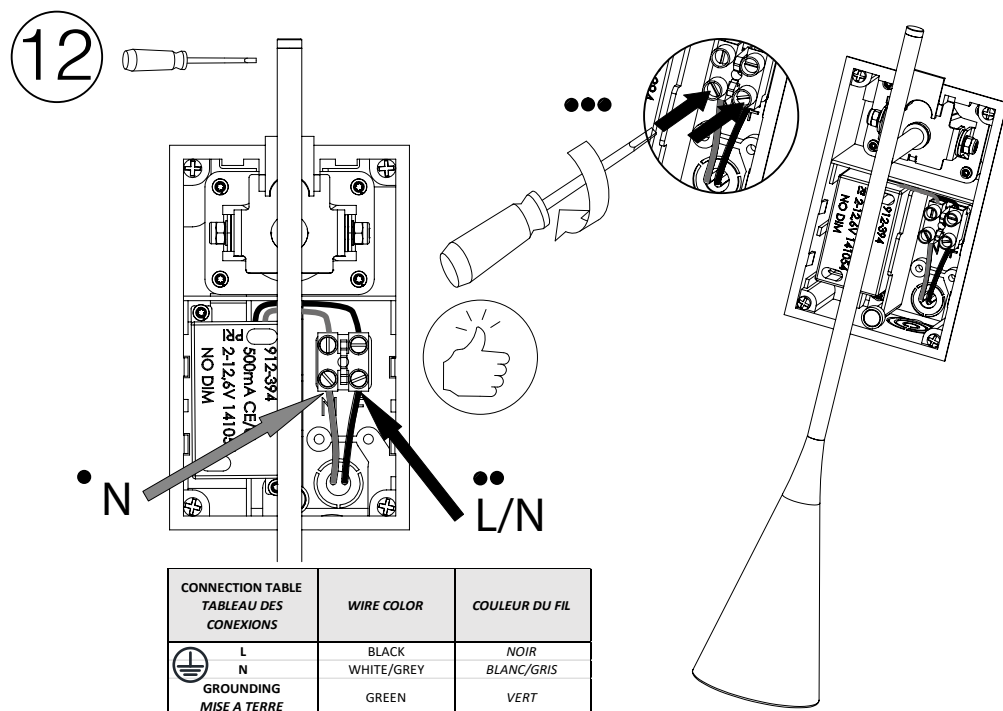
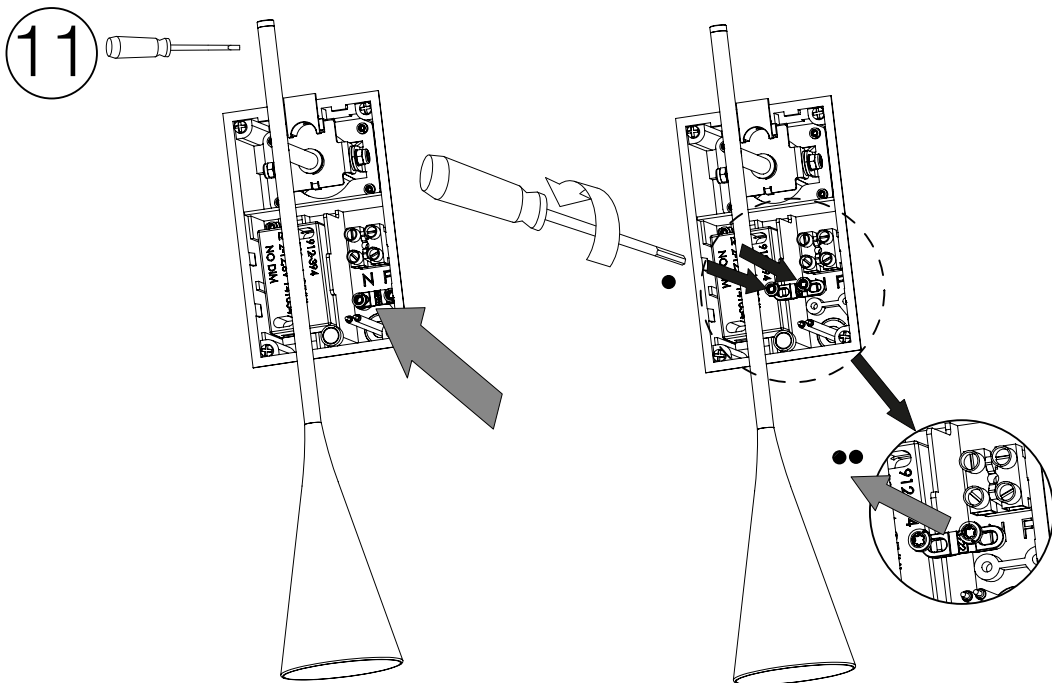


9

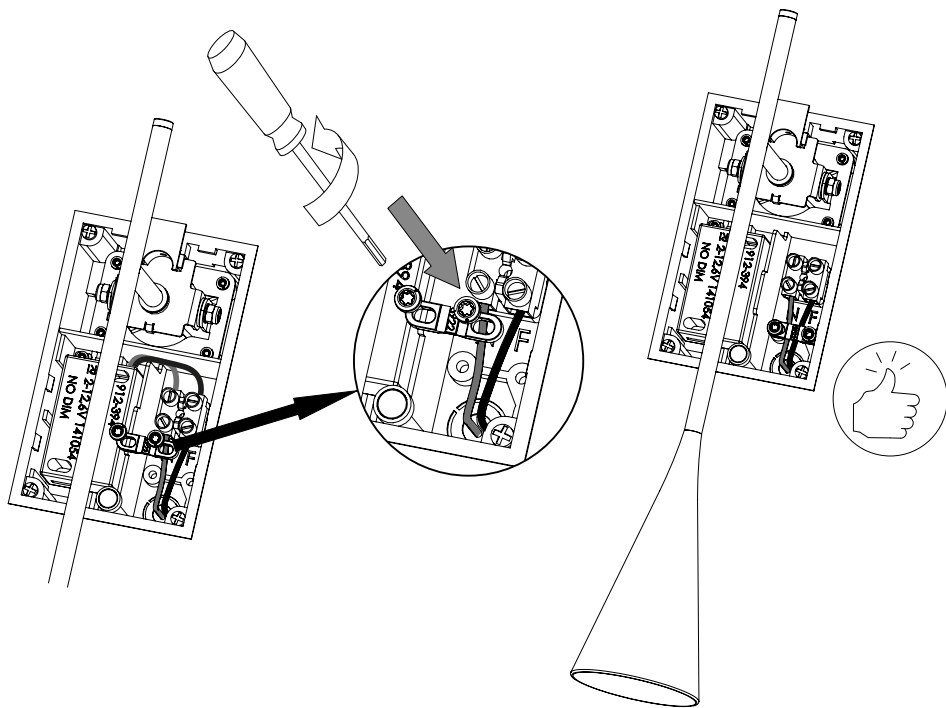


10

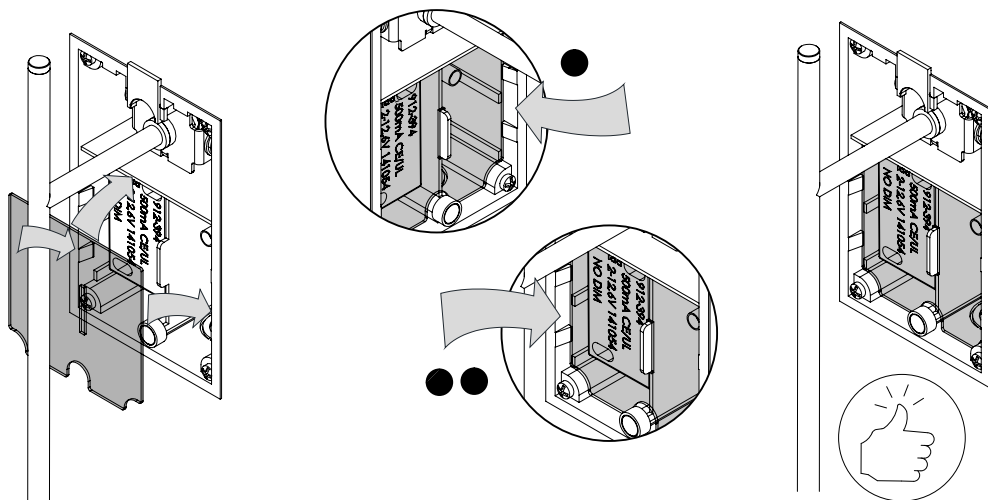




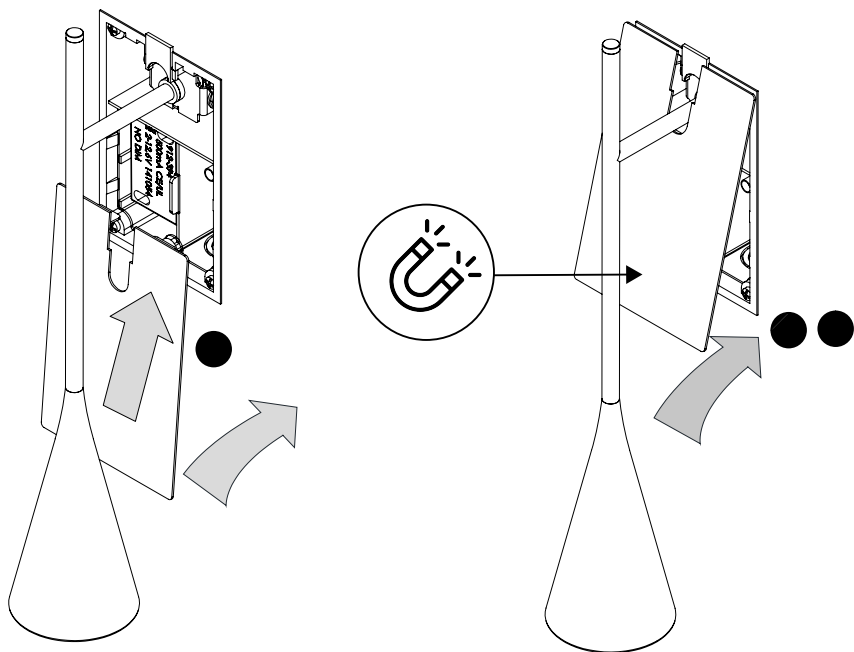
13



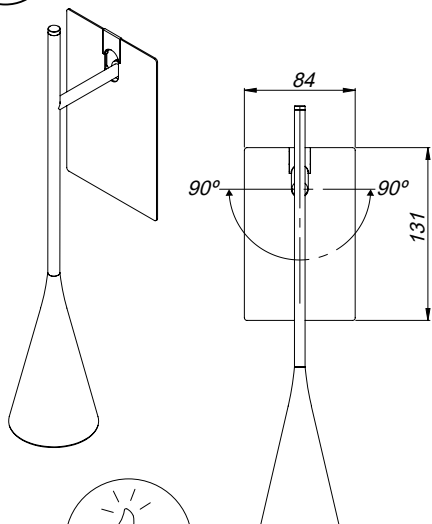
14



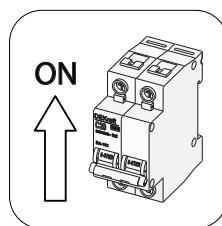
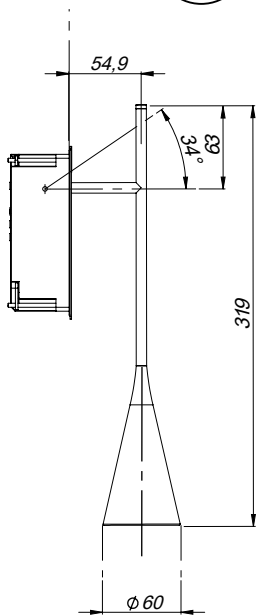
15



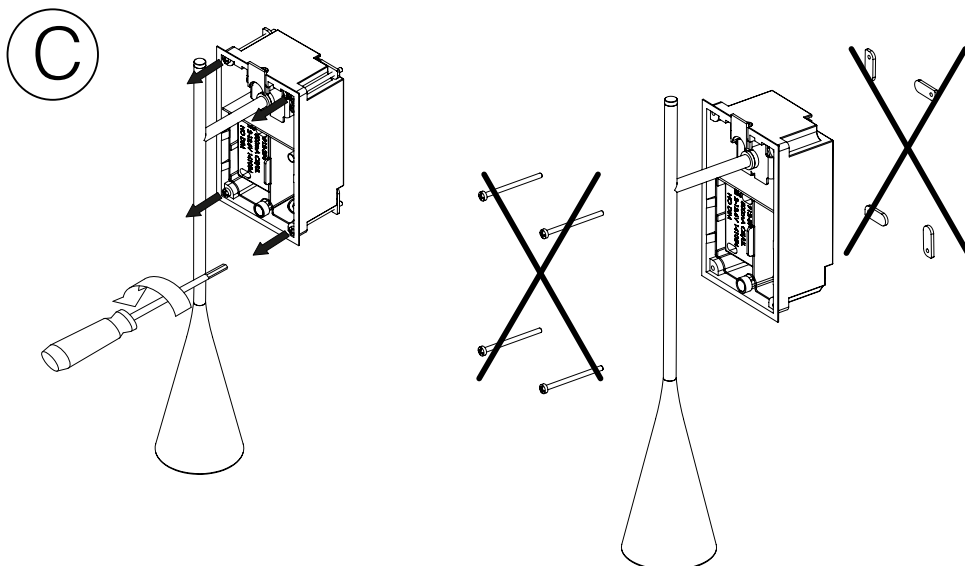
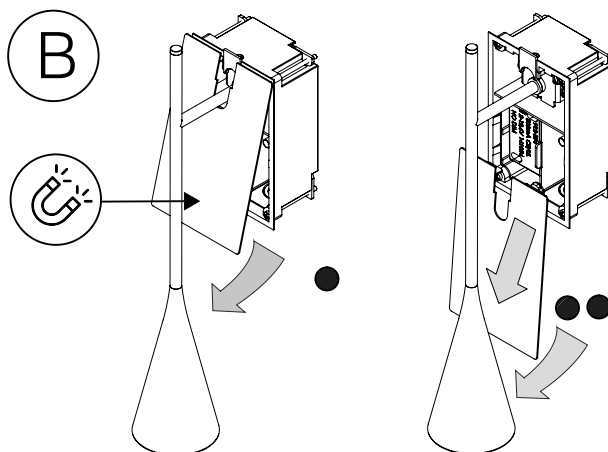
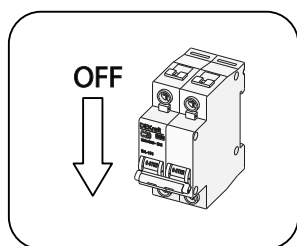
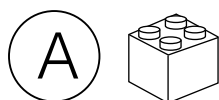
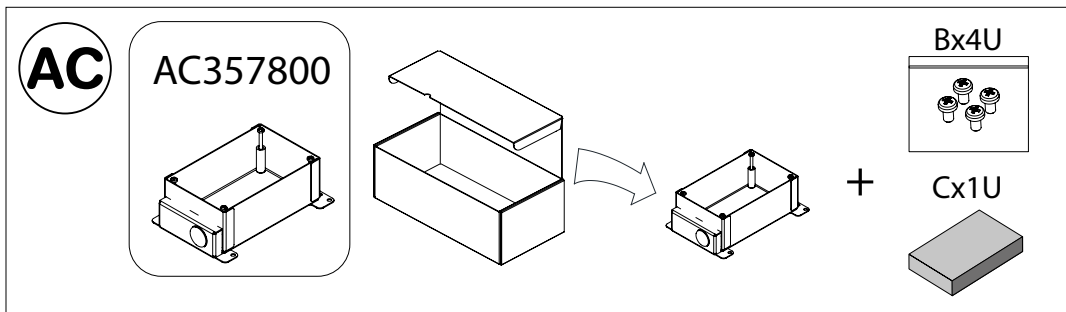
16



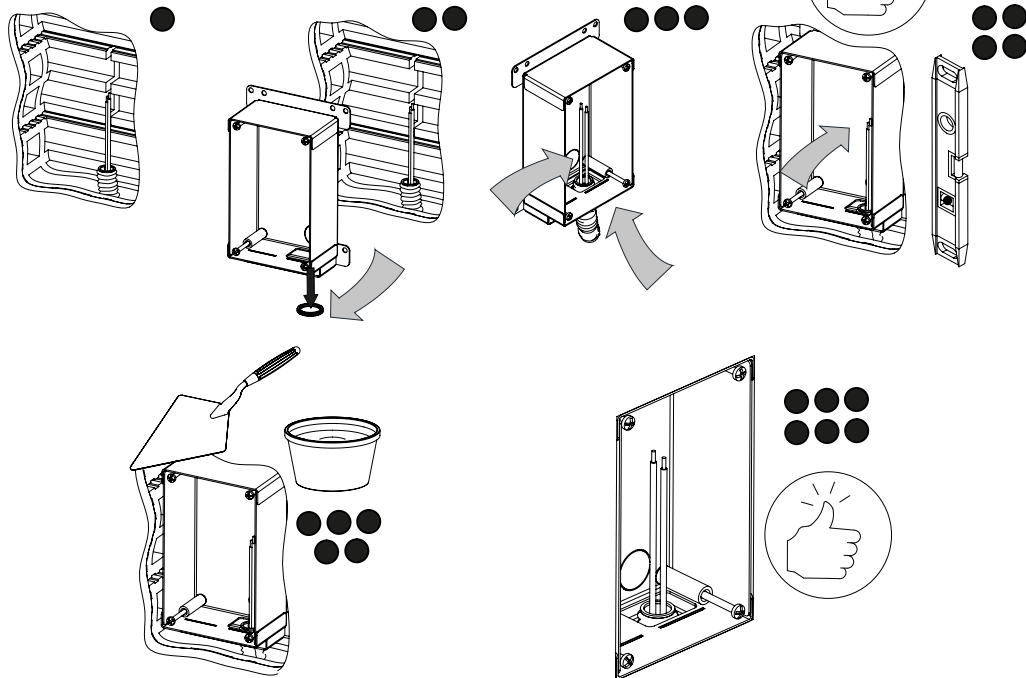
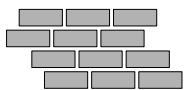
17



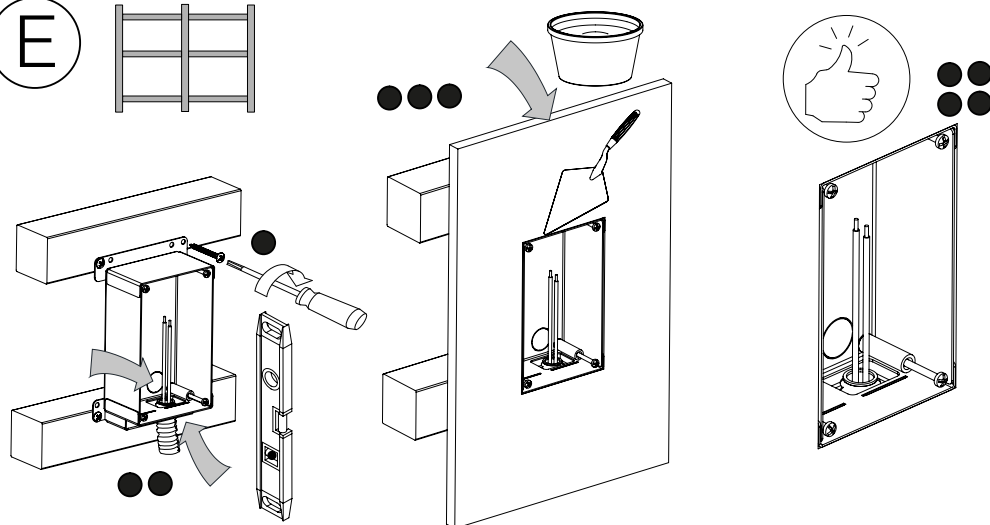
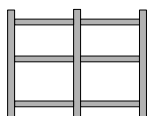
35759 Skybell Plus A/02 - Read all the instructions-Save all the instructions
Lisez toutes les instructions - Conservez toutes les instructions



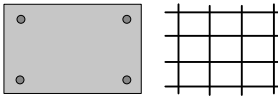
D



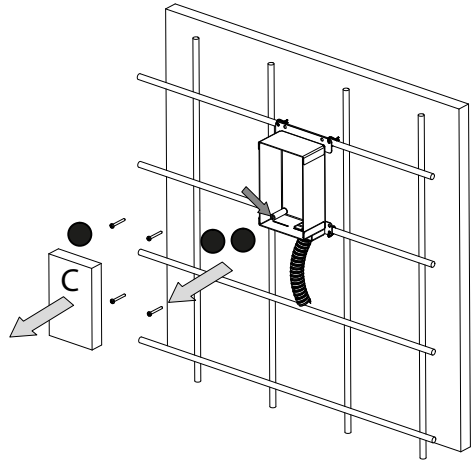
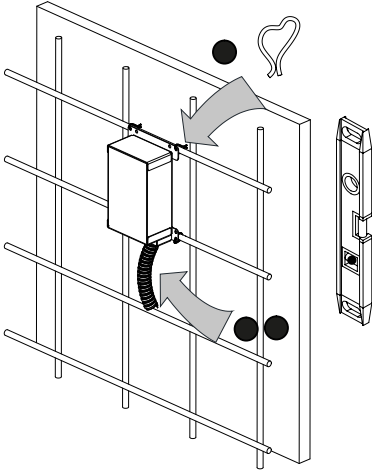
E



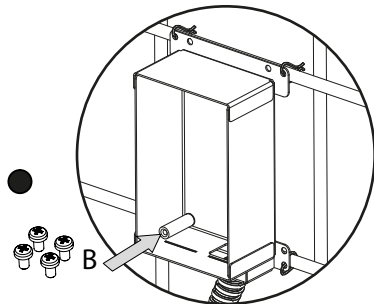
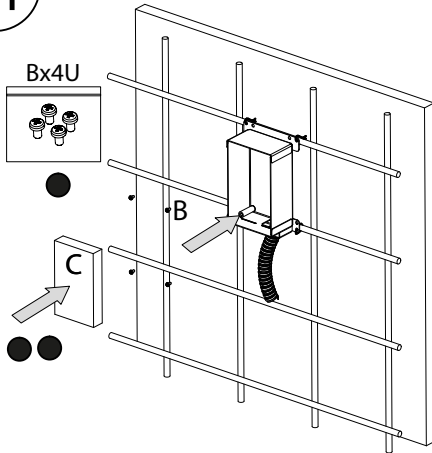
F



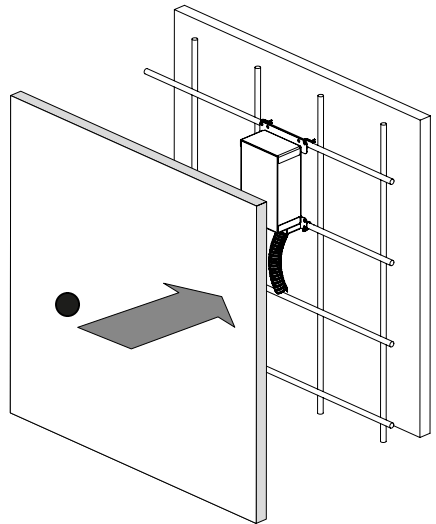
G



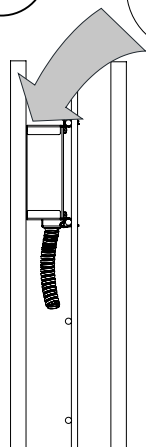
H



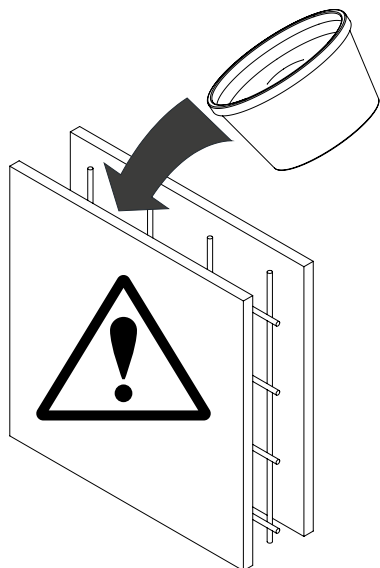
I



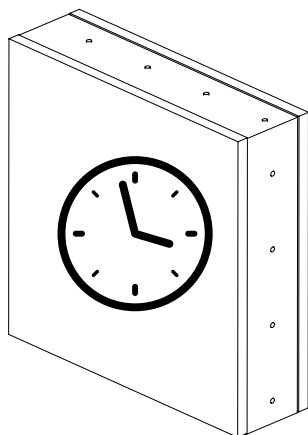
J



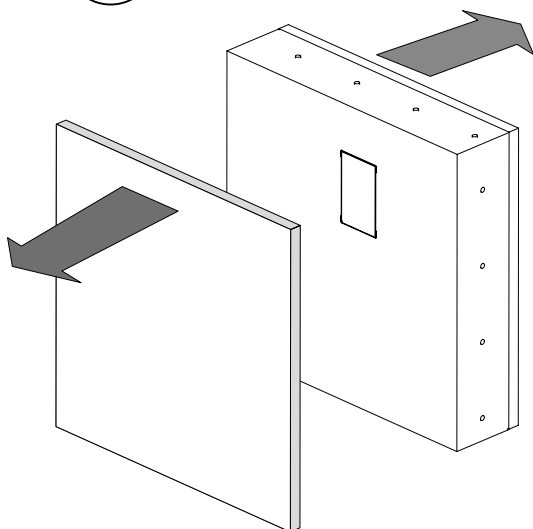
K



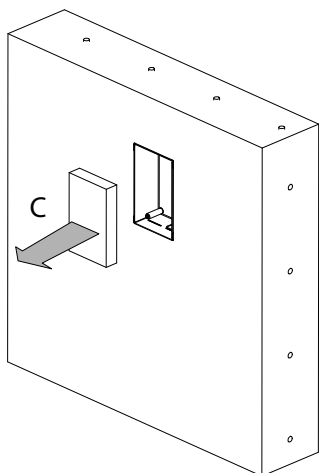
L



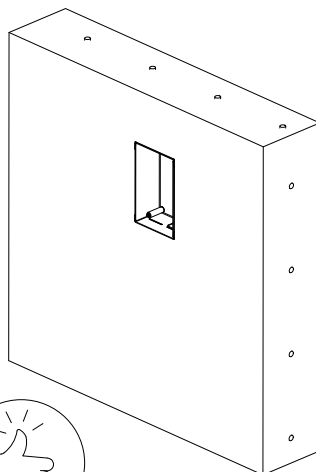
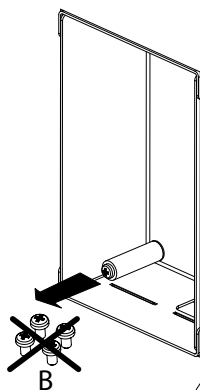
M



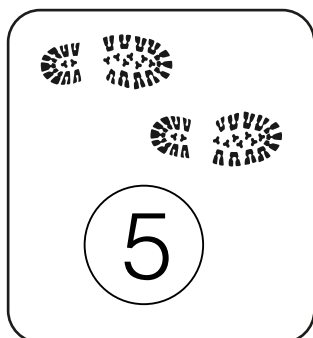
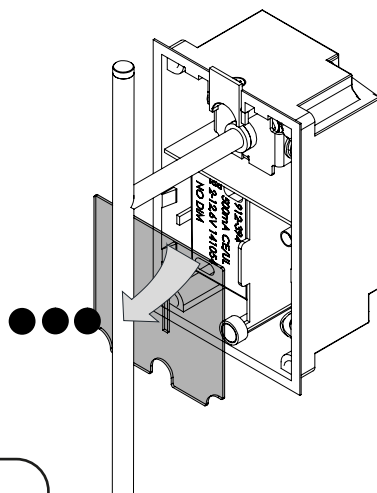
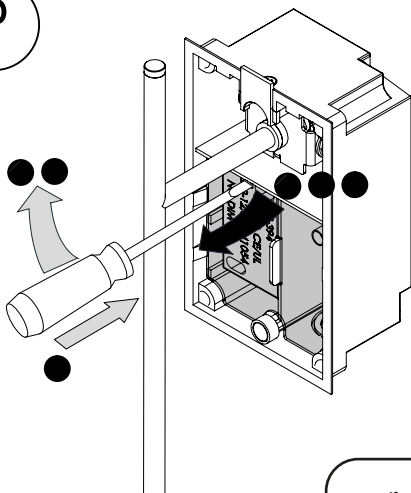
N



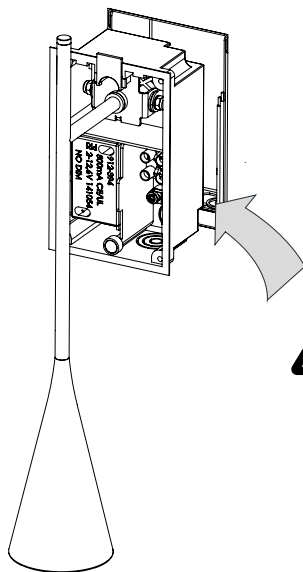
O



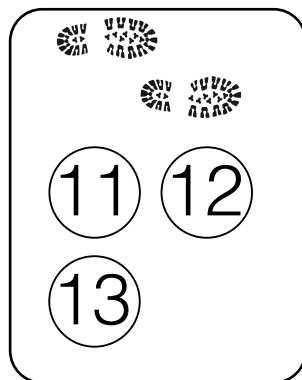
P



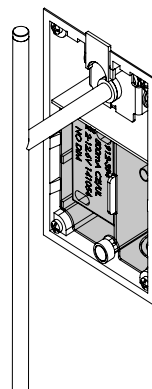
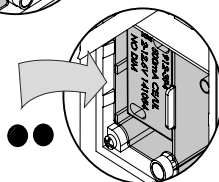
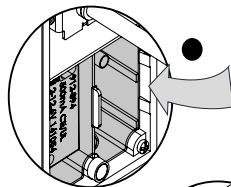
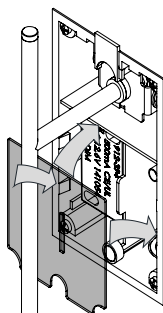
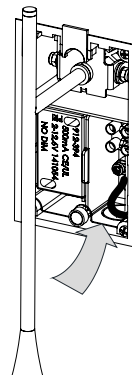
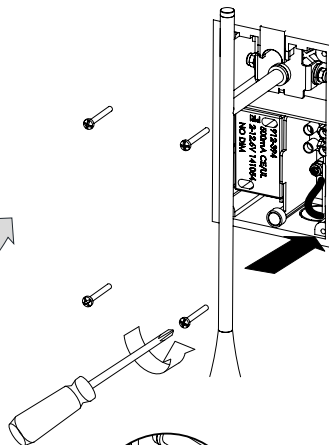
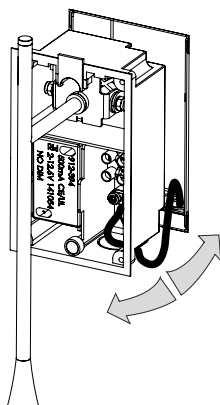
Q



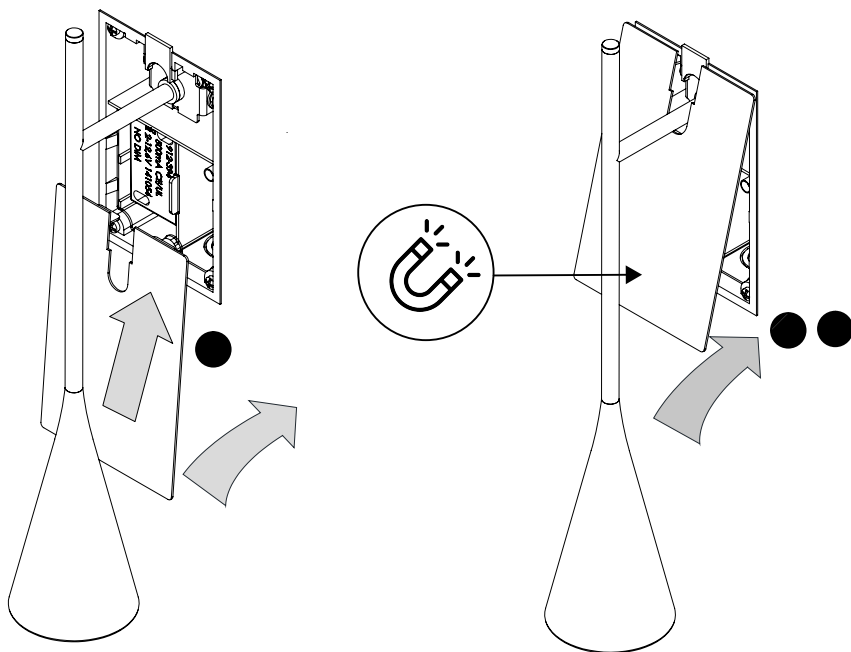
R



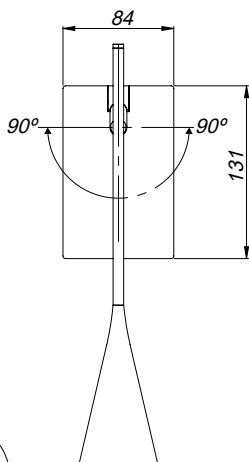
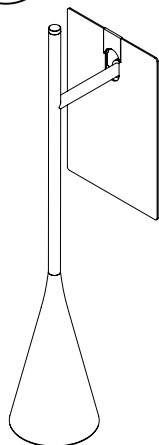
R



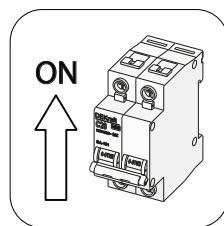
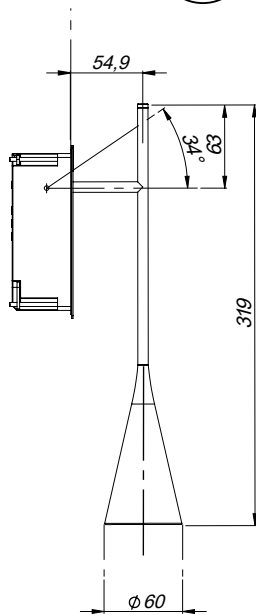
S



T



U



35759 Skybell Plus A/02 - Read all the instructions-Save all the instructions
Lisez toutes les instructions - Conservez toutes les instructions

bover
barcelona lights

Avda. Catalunya 173
Poligon Ind. Sud
08440 Cardedeu
Barcelona, Spain

T. +34 938 713 152
F. +34 938 462 089
info@bover.es
www.bover.es

1231 Collier Road,
Suite C
Atlanta, GA 30318
United States

T. +1 (404) 924 2342
info@boverusa.com
www.boverusa.com

35759 Skybell Plus A/02 - Read all the instructions-Save all the instructions
Lisez toutes les instructions - Conservez toutes les instructions

